



B&P have been appointed to provide a summary on the envisaged stormwater layout, constructability, maintainability and serviceability review of the envisaged services.

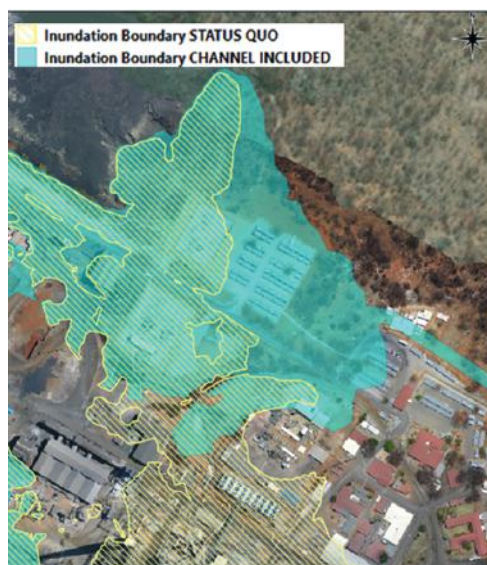
Further to this, B&P provided a 100 year flood line Desktop Study Report. This study entailed the use of readily available data and resources to conduct a high-level assessment of potential risks and the associated measures which may be implemented to mitigate them.

DPMT STORM WATER MAINTENANCE

Phase 2: Rehabilitation of Channels Engineering

PROJECT STATS

- Value Desktop Study Only
- Location Tsumeb, Namibia
- Client Dundee Precious Metals Tsumeb
- Start 08/2020
- Finish In progress



- Project Management
- Civil

SERVICES

- Project Management
- Desktop Study
- Assessments & Recommendations
- Reporting